

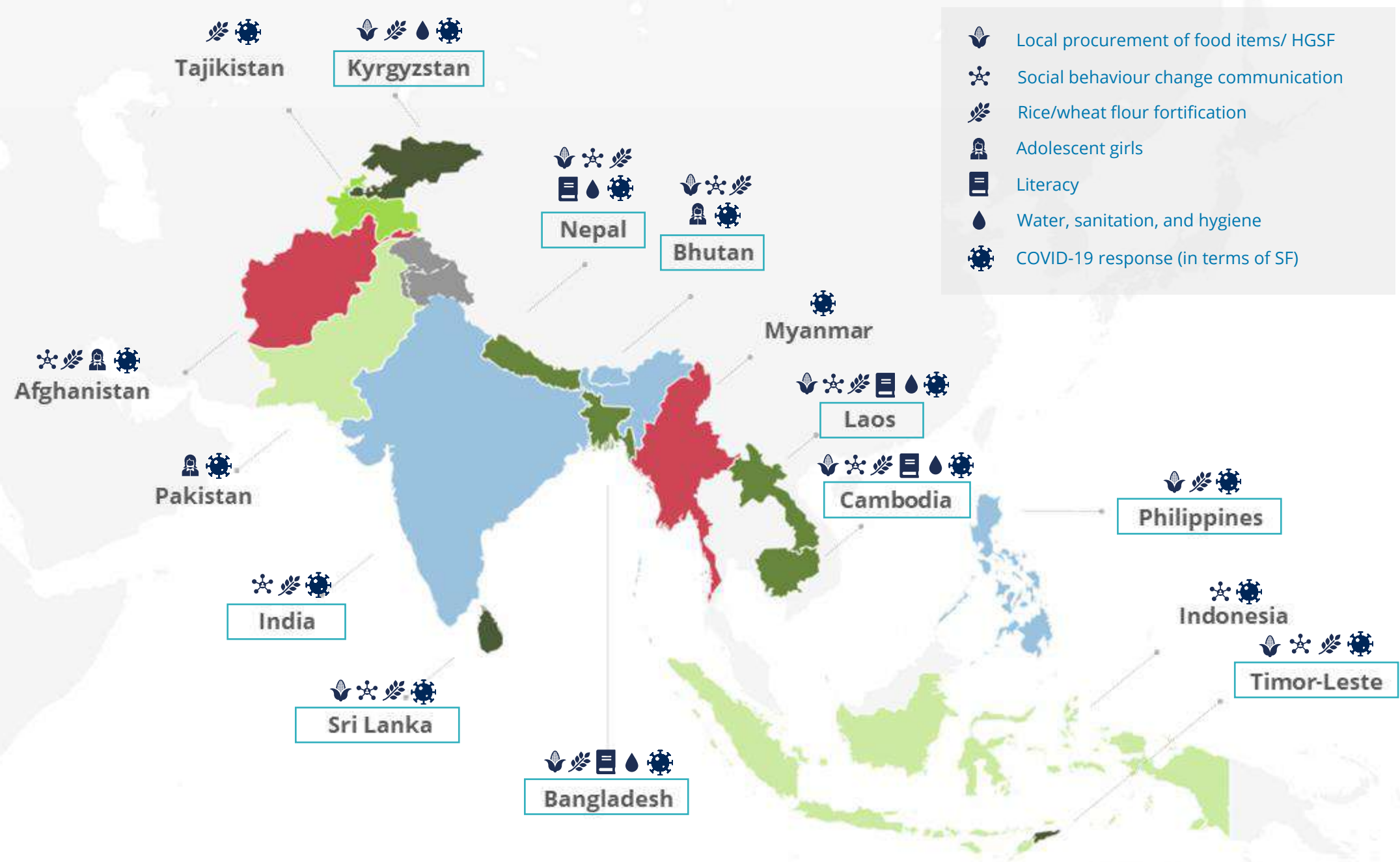


World Food Programme



SAVING  
LIVES  
CHANGING  
LIVES

## School Feeding Asia and the Pacific



- Local procurement of food items/ HGSF
- Social behaviour change communication
- Rice/wheat flour fortification
- Adolescent girls
- Literacy
- Water, sanitation, and hygiene
- COVID-19 response (in terms of SF)



Has a national SF programme

**Role 1**  
Operational support in fragile context

**Role 2A**  
Operational support or technical assistance to localized government-led initiatives (no national programme)

**Role 2B**  
Operational support + capacity strengthening (national programme being established)

**Role 2C**  
↓ direct implementation  
↑ support to transition (national programme with active transition/handover plan)

**Role 2D**  
Enhancements through pilots/ capacity strengthening (established national programme)

**Role 3**  
Consolidation and strengthening of national programme





# WFP's Role in School Feeding in Asia and the Pacific

Role 1	Role 2A	Role 2B	Role 2C	Role 2D	Role 3
<p>Providing operational support in fragile contexts</p> <p><b>AFGHANISTAN</b> <b>MYANMAR*</b></p>	<p>Providing operational support/technical assistance to localised government/ federal state-led initiatives in the absence of established national school feeding programmes.</p> <p><b>INDONESIA</b> <b>PAKISTAN</b></p>	<p>Providing a package of operational support and capacity strengthening activities in the countries where national school feeding initiatives are being established</p> <p><b>TAJIKISTAN</b></p>	<p>Providing decreasing support to direct implementation and increasing support to transitioning to national programmes with active transition/ handover plan</p> <p><b>BANGLADESH</b> <b>CAMBODIA</b> <b>LAO PDR</b> <b>NEPAL</b></p>	<p>Implementing specific pilots/capacity strengthening initiatives to support enhancement of established national school feeding programmes</p> <p><b>KYRGYZ REPUBLIC</b> <b>SRI LANKA</b> <b>TIMOR-LESTE</b></p>	<p>Consolidation and strengthening of national school feeding programmes</p> <p><b>BHUTAN</b> <b>INDIA</b> <b>PHILIPPINES</b></p>

\*Capacity strengthening activities to support the establishment of the national school feeding programme in Myanmar are currently on hold. Upon resumption of those activities, WFP will return to playing Role 2B.

# Why School Feeding

## Role of School Feeding

- Contributing to access to education
- Contributing to better health and nutrition status
- Safety net
- HGSP: support to small holder farmers
- Promoting access to education for adolescent girls



**Afghanistan**  
**Bangladesh**  
**Bhutan**  
**Cambodia**  
**India**  
**Indonesia**  
**Lao PDR**

  
**3.6 mln**

  
**US\$59 mln**

**Myanmar**  
**Nepal**  
**Pakistan**  
**Philippines**  
**Sri Lanka**  
**Timor-Leste**

# Narrative underpinning SF Strategy 2020-2030

- Shift school feeding programmes away from solely the provision of a school meal towards implementing a more holistic, integrated school health and nutrition programme.
- For the first time WFP developed a framework based on the country context to guide the role of WFP and the support it provides in the field.
- WFP is aligning to the new 8000 days paradigm: focus on the first 1000 days is an essential but insufficient investment. Next 7000 days is important. Children need specific support during specific phases of the 7000 days. Early childhood, middle childhood, adolescence.
- Cost effective interventions have been identified as packages of support at different stages.
- WFP will work with partners to support the delivery of integrated packages for children; sharpen its advocacy, convening and influencing capacities; and act as a catalyst and a facilitator of global, regional and country efforts on school health and nutrition
- Works with governments to increase the sustainability and institutionalization through an approach to strengthening national systems and plans

# 4 Work Streams are included in the new WFP School Feeding Strategy (2020-2030)



**Work stream 1:** Sharing knowledge and best practice globally



**Work stream 2:** Increasing the investment in school feeding: a new financing model

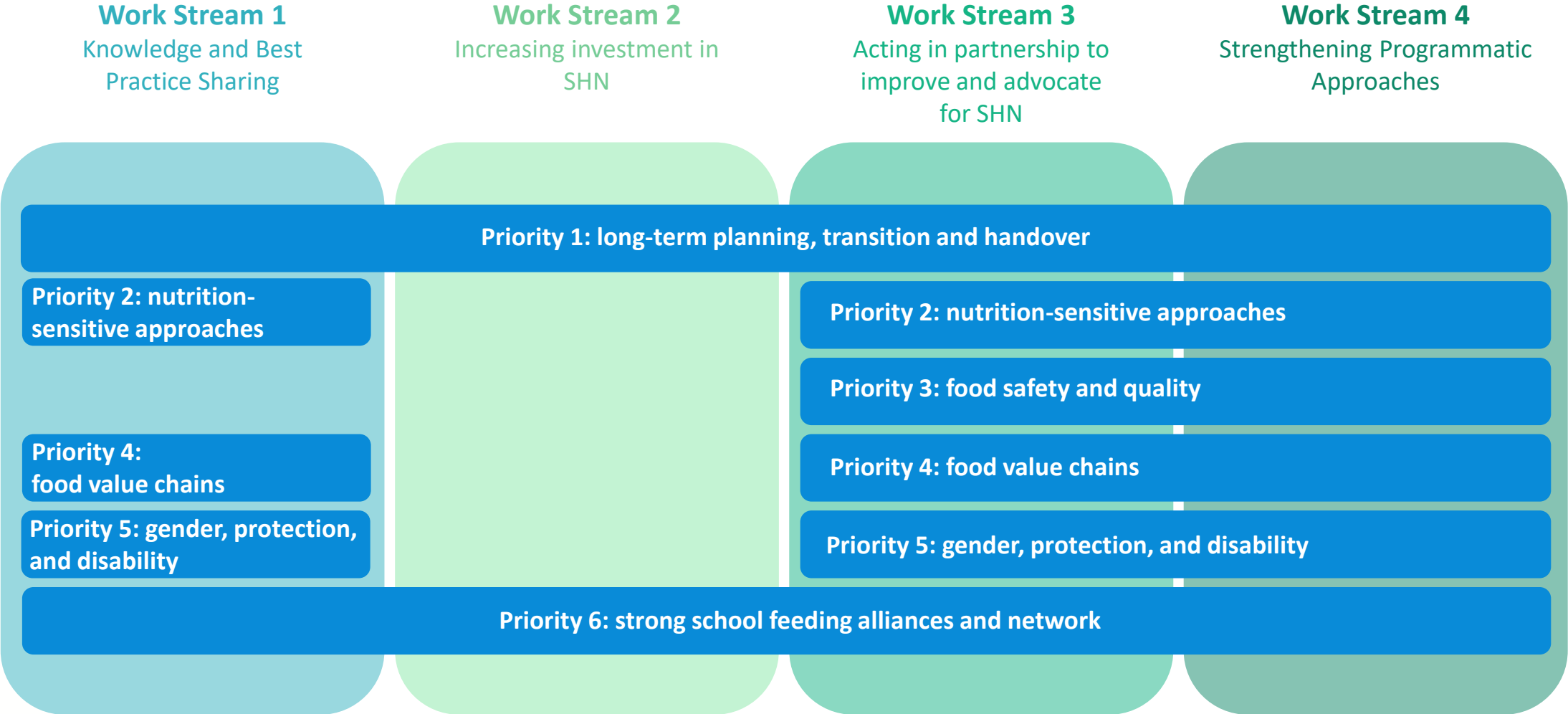


**Work stream 3:** Acting in partnership to improve and advocate for school health and nutrition



**Work stream 4:** Strengthening programmatic approaches in key areas

# Work Streams and Regional Priorities are interlinked



# Work stream 1: Better evidence is needed to improve WFP's programmes and convince governments that SHN is a good investment



## HOWEVER...

Abundant information from evaluations and programme monitoring

More information is required on some key topics

- 1. Research
- 2. Improved evaluation
- 3. Programme outcome monitoring

Certain areas lack evidence

Knowledge sharing and building communities of practice



Information needs to be shared more widely



# Work stream 2: Resource mobilization strategies



Increasing investment in SHN



# Work stream 3: RBB aims to build political commitment at regional and national levels for SHN and improve integration of health and nutrition services

WS1

WS3

WS2

WS4

Acting in partnership to improve and advocate for school health and nutrition

## ADVOCATE

for SHN policies and strategies

Governments

Regional entities



Interagency and sector groups

UN Partners



UNITED NATIONS  
**ESCAP**  
Economic and Social Commission for Asia and the Pacific

Academic/ research institutions

NGOs

International financial institutions

To be complemented by engagement strategies with key partners

Private Sector

## RESOURCE MOBILIZATION

# Work stream 4: Strengthening programmatic approaches

## Long-term planning, handover, and transition



- Policy frameworks
- Financial capacity
- Institutional capacity and coordination
- Design and implementation
- Community roles

## Social Behavior Change Communication



## Rice fortification



## Home-grown school feeding



## Food Safety and Quality



## Gender, Protection, and Disability



## Data and Digital Innovation



World Food Programme



Q&A